

Material Guide



Content

Jess frames	3
Jess wooden tabletops	4
Jess leathers	5
Jess fabrics and outdoor	8
Jess carpets	10
Jess caps	12
Warranty and maintenance	14

Jess frames



Old Glory:

The frames are clearly provided with properties and processing tracks that are characteristics of vintage frames. Weld seams and machine marks are visible on an Old Glory frame, which is also the intention to show its' characteristics. These frames are supposed to have a vintage look. The frames have light, dark spots and corrosion spots (speckles under the clear varnish). Numbers can also be visible on these frames and enhance the vintage look. The tubes are made of hot-rolled structural steel and the solid wire are hot-rolled solid steel. These hulls go into a phosphate tar tunnel whereby they change color. The frames are finished with a clear varnish to make them water and dirt resistant. With the steel frames you can see the material in its' purest form. This means that stains, scratches and color differences can occur.. This industrial appearance is inevitably linked to the properties of the material and is therefore not a ground for complaint. The Old Glory frames can be cleaned with a slightly damp cloth.

Brushed stainless steel:

The frames are clearly provided with properties and processing tracks that are characteristic of stainless steel frames. This means that light brush scratches are allowed in production. This industrial appearance is inevitably linked to the properties of the material and are therefore

not grounds for complaints. Stainless steel frames can be cleaned with a slightly damp cloth and possibly afterwards treated with silicone spray.

Black epoxy:

The tubes are made of hot-rolled structural steel and the solid wires are hot-rolled solid steel. The hulls go into a phosphate tar tunnel whereby they change color and are then finished with a clear varnish to make them water and dirt resistant. The frames are painted black with Ral 9005 industrial paint. The frames can be cleaned with a slightly damp cloth.

Coppered:

The frames are clearly provided with properties and processing tracks that are characteristics of the copper appearance. Weld seams and machine marks are visible on a coppered frame, which is also the intention. The tubes are made of hot-rolled structural steel and the solid wires are hot-rolled solid steel. The frames are colored in a copper bath. After that, they are exposed to weather influences to give the copper an authentic appearance. They are then finished with a clear varnish to make them color-retaining, water- and dirt-repellent. The coppered frames can be cleaned with a slightly damp cloth.

Jess wooden tabletops

4

Wood is a natural product. No single tree is the same: they all have different characteristics and characters. Therefore, your dining table may look different from your coffee table, for example; there may be differences in structure or color with respect to the wood sample in the store or other products. These features are proof of your original designer furniture. Please note that wood reacts very strongly to environmental factors such as cold / heat and humidity. Especially in winter, your wooden furniture has a hard time and will most likely expand and / or show small cracks.



Black sandblasted oak

The oak is first sandblasted. The wood is then oiled with oak charcoal oil with black pigment.

Oak

The oak is finished with oak oil.

Walnut

The walnut wood is finished with walnut oil.

These properties are inextricably linked to real wood and therefore not a ground for complaint. The quality of your solid wood furniture is best guaranteed with an air humidity of 45-60%.

This humidity can be measured with a hygrometer. Please note: the atmosphere in new-build houses in particular is extremely dry because of well insulation. Extra attention is needed for the humidity here. You can find more information on maintenance on page 14.

Jess leathers



Bonanza leather

Properties and finish

Bonanza is a tough kind of buffalo leather and looks rough and wild and has the nature of the animal itself. The hides are tanned with vegetable materials and thereafter the grain side is treated manually with oil to provide the leather with a rough character. The beauty of this kind of leather is the various colour differences, the natural little faults like insect bites and scratches.

Maintenance: In case the leather will be touched with liquids we advise to dab the leather only slightly and to have it dried in a natural way. Should the leather be damaged or discolored by liquids or otherwise one could treat the leather by preference with maintenance wax or oil suitable to the leather. It is recommended not to place furniture in the full and direct sunshine.



Luxor leather

Properties and finish:

Luxor is drumdyed with high quality aniline dye stuffs. Because of the vacuum drying system that is applied, the leather keeps his compact fibre structure so that eventual looseness in usage is avoided. After the skins are turned into crust, a special wax is applied on the grain which gives the leather a very sturdy look. After finishing, the leather gets tumbled in a wooden mill to create a broken grain effect. Thereafter it is plated to obtain a nice smooth and semi shiny look. The wax applied is burnishable to enhance the anilin and pure character of the leather. The leather does not have a finish that covers the natural characteristics and small defects of the hide itself. Some minor defects and healed scratches form part of the selection, but enhance the looks of the sofa or chair.

Maintenance: One could treat the leather by preference with maintenance wax or oil suitable to the leather.

5



Aurula leather

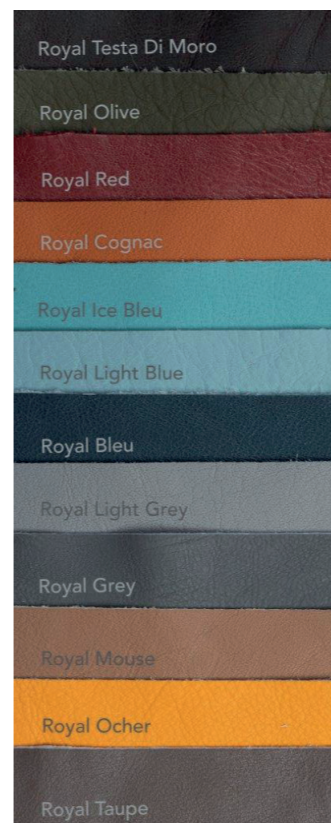
Properties and finish:

Aurula combines the finesses of an oily/waxy finishing with the rugged, authentic character of the Buffalo skin the skins are mainly dyed with chromium, giving the leather a smooth and soft touch. The article is processed with aniline dyes so that there no skin characteristics are covered. The greasy leathery touch is created by a finishing with different types of refined mineral oil.

The buffalo structure clearly visible and so adding to the leather an extra dimension. The beauty of this leather is in the deep color shading, and the nice smooth feel. The skins used for the Aurula leathers are from the best selections.

Maintenance:

Should liquids have been spilled on, we advise to softly absorb the liquid from the leather and let it dry after which the leather can best be treated with a specialized (waxy) treatment. Do not use any maintenance and/or polish products that are not specifically intended for this article. Please apply maintenance products in a gentle way. Light scratches can be removed by hand polishing or by polishing with a soft clean cloth. It is recommended not to place the furniture in direct sunlight. In addition to these instructions, it is good to apply a Scotchgard leather protector every 6 months so to keep the leather protected.



Royal leather

Properties and finish:

Royal Leather is an elegant leather produced from buffalo skins. It has a nice soft touch and the effect is applied in the finish. The tanned skins are chrome tanned, after that a first pigment layer is arranged. Then there is successively applied an aniline dye, and a white wash arranged in order to give the article a good characteristic finish.

Since it concerns a 'real' and 'pure' leather article (aniline) and is not fully covered leather, you should consider some aspects. Leather is a natural product and has therefore natural features such as insect bites, scars, scratches, neck wrinkles. Due to the nature of the painting and tanning there may come large differences in color in both of the skins as each separate skin, which are characteristic of this particular type of leather. These properties can not be a reason for complaint. The beauty of this leather are the different shades, the beautiful and very distinct grain structure of the buffalo. This firmly yet elegant leather will only get better in use.

Maintenance:

Aniline leather tolerates nu sun. Protect your furniture to direct radiation. Regular dusting off with a soft dry cloth, occasionally treat with leather care products (which are suitable for this type of leather only). Please avoid hard rubbing.

Natural materials

The fabrics that we use for our furniture consist largely of natural materials such as jute, cotton and linen. These fabrics have the same properties as our leather. Natural properties are visible and makes every product unique.

Manufacturing process

A special technique is used for the Riga and Antwerp fabric to give the product a distinctive look. The fabric is put in a large washing machine, where the unique pigments and colors are added. The washing process takes place at 60 degrees Celsius. The washing and dyeing process proceeds simultaneously, so that the unique washed-out coloring obtained is achieved. The fabric is then put in a dryer, which creates the special finish. This process is repeated and the fabrics may then rest in a folded state. Due to this process, each batch can be different and slightly different from the sample.



STOF OSLO

Composition: 63% CO, 37% LI
Width: app. 140 cm
Lightfastness: ISO 5
Abrasion: app. 32.500 Martindale



STOF PARIS

Composition: 58% CO, 23% CV, 19% JU
Width: app. 140 cm
Lightfastness: ISO 4
Abrasion: app. 20.000 Martindale



STOF STOCKHOLM

Composition: 39% LI, 27% JU, 24% CV, 10% CO
Width: app. 140 cm
Lightfastness: ISO 4-5
Abrasion: app. 30.000 Martindale



STOF RIGA

Composition: 60% CO, 40% JU
Width: app. 140 cm
Lightfastness: ISO 4-5
Abrasion: app. 24.000 Martindale



STOF MELBOURNE (OUTDOOR STOF)

Composition: 100% PP, High performance outdoor/indoor
Width: app. 155 cm
Lightfastness: ISO 7
Abrasion: app. 30.000 Martindale



STOF TUNDRA (OUTDOOR STOF)

Composition: 100% Sunbrella® Acrylic, Water-repellent and Stain-proof
Width: app. 140 cm
Lightfastness: ISO 4-5
Abrasion: app. 35.000/40.000



STOF ANTWERP

Composition: 68%LI, 14%JU, 10%CV, 8%CO
Width: app. 140 cm
Lightfastness: ISO 4
Abrasion: app. 20.000 Martindale



STOF AMSTERDAM

Composition: 60% LI, 38% WO, 2% PES
Width: app. 130 cm
Lightfastness: ISO 5
Abrasion: app. 30.000 Martindale



The Earl Outdoor is the first series of outdoor furniture designed by Jess. The stylish appearance provides a unique garden experience. The series consists of an armchair, loungechair and 3-seater sofa.

UV resistant

The stainless steel lower frame has a UV-resistant powder coating, available in 3 RAL colors. Despite the fact that the material will not rust, it is important for the inner frame to not unnecessarily leave the furniture outside in wind and weather. In winter it is therefore recommended to cover the armchairs, lounge and / or 3-seater sofa with a specially designed cover, or to put them away in a dry place.

Quick dry foam

The Earl Outdoor series is equipped with a quick dry foam, called Dryfeel. This specially developed material has a completely open cell structure, so that water and moisture vapor can quickly and efficiently be removed.

This also maximizes comfort in humid conditions. The characteristics of Dryfeel are:

- Breathable structure through wide open cells
- Lasting resilience
- Built-in bacteria protection
- Resistant to sea and swimming pool water

Weatherproof fabric

The fabric used for the Earl Outdoor series is of high quality, water-resistant and anti-mildew. The fabric is not water-tight, but resistant to rain showers.

Specially designed protective cover

To be able to offer a full guarantee, it is important that the furniture is protected against extreme weather conditions. We therefore recommend the use of the specially designed protective cover. This is made of Surlast, a technical textile from the Sunbrella Marine Protection Collection.



The combinations of rug and leather are recommendations. This means that the rugs can be made with other Jess leathers. A Jess label is sewed at the leather edge.



CARPET WORM

Productieproces: 5/16" divided, lusppol, tufted
 Pol material: 80% Wol, 10% polyester Melt-5%PA-5%PP
 Pile weight: 2.300 gram / M²
 Total weight: 3.337 gram / M²
 Total carpet height: 16,7 mm
 Number of studs: 25.350 / M²
 Back: Action Bac
 Width: 400 cm
 Applyable: Living heavy



CARPET SEAL

Production process: 5/16 "division, loop pole, tufting
 Pile material: 80% Pure new wool - 20% Yak, 3-thread yarn, flake paint
 Pile weight: 1,480 grams / M² Total weight: 2,456 grams / M²
 Total carpet height: 10.3 mm
 Number of studs: 28,500 / M²
 Back: Action Bac
 Width: 400 - 500 cm
 Applicability: Living heavy, project based



CARPET ELEPHANT

Productieproces: 1/2" divided, lusppol, tufted
 Polmaterial: 100% New Zealand Wool, 4 thread yarn, flake paint, washed
 Pile weight: 2,050 grams / M² Total weight: 3,347 grams / M²
 Total carpet height: 13.5 mm
 Number of studs: 14,500 / M²
 Back: Action Bac
 Width: 400 cm
 Applicability: Living heavy, project based



CARPET LION

Production process: 1/4 "division, cut pile, tufted
 Pile material: 100% Pure wool, 3-thread yarn, undyed
 Pile weight: 1,650 grams / M² Total weight: 2,544 grams / M²
 Total carpet height: 12.0 mm
 Number of studs: 115,000 / M²
 Back: Jute
 Width: 400 cm
 Applicability: Living heavy, project based



CARPET MOLE

Production process: 1/4 "division, cut pile, tufted
 Pile material: 100% Pure wool, 3-thread yarn, undyed
 Pile weight: 1,650 grams / M² Total weight: 2,544 grams / M²
 Total carpet height: 12.0 mm
 Number of studs: 115,000 / M²
 Back: Jute
 Width: 400 cm
 Applicability: Living heavy, project based



CARPET DEER

Production process: 1/2 "division, loop pole, tufted
 Pile material: 100% Pure new wool, 15-thread yarn, flake paint
 Pile weight: 2,400 grams / M² Total weight: 3,528 grams / M²
 Total carpet height: 16.4 mm
 Number of studs: 11,900 / M²
 Back: Action Bac
 Width: 400 cm
 Applicability: Living heavy, project based



CARPET WOLF

Production process: 1/2 "division, loop pole, tufted
 Pile material: 100% Pure Wool, single-thread yarn, undyed, rolled
 Total carpet height: 19.5 mm
 Number of studs: 18,920 / M²
 Back: Jute
 Width: 400 cm
 Applicability: Living heavy, project based



CARPET DONKEY

Production process: 1/4" division, loop pole, tufted
 Pile material: 100% New Zealand Wool, 3 thread yarn, flake paint
 Pile weight: 2.000 gram / M²
 Total weight: 2.930 gram / M²
 Total carpet height: 11,9 mm
 Number of studs: 39.401/ M²
 Back: Action Bac
 Width: 400 cm
 Applicability: Living heavy



CARPET POLAR BEAR

Production process: 1/2 "division, loop pole, tufted
 Pile material: 100% New Zealand Wool, 4 thread yarn, flake paint, washed
 Total carpet height: 13.5 mm
 Number of studs: 14,500 / M²
 Back: Action Bac
 Width: 400 cm
 Applicability: Living heavy, project based



CARPET CAMEL

Production process: 5/32 "division, loop pole, tufting
 Pile material: 100% Pure new wool, 6 and 2-thread yarn, flake paint
 Pile weight: 1,280 grams / M² Total weight: 2,372 grams / M²
 Total carpet height: 9.8 mm
 Number of studs: 50,000 / M²
 Back: Jute
 Width: 400 - 500 cm
 Applicability: Living heavy, project based



CARPET HARE

Production process: 1/2 "division, loop pole, tufted
 Pile material: 100% New Zealand Wool, 4 thread yarn, flake paint, washed
 Total carpet height: 13.5 mm
 Number of studs: 14,500 / M²
 Back: Action Bac
 Width: 400 cm
 Applicability: Living heavy, project based

Jess caps



BALL FLOOR CAP WITH FELT
Pinas in stainless steel



FURNITURE CAP PLASTIC
Vasa elements



WHEEL
Forward on wheels, Sanne on wheels



FELT SCALE INTEGRATED FELT
Anders, Comfy, Cuscini, Dean, Beal, Earl, Knight, Marquess, Minos, Newton, Neal, Norman, Raz, Silas, Casa Mia Sofa, Micasa frame, My Home frame, Amy barchair, Alex barchair, Cody barchair, Norman barchair, Cody, Cliff,



GLIP CAP WITH FELT
Alek, Beal, Earl 2 en 3 zits, Boo, Duke, Howard, Irving, Matt, Nelson, Polar, Senso, Timo Beal hocker, Charles, Senso barkruk, Irving barkruk



CAP INTEGRATED FELT FLY FEET WITH FELT BACK
Iving barchair en Senso barchair



BALL FLOOR CAP WITH FELT Ø 25 MM
Globe, Lennox Daybed



BALL FLOOR CAP WITH FELT Ø 16 MM
Sanne, Sanne barchair, Vidar, Forward, Micasa armchair



CAP WITH ADJUSTABLE HEIGHT
Bartable Jimmy



SLIP CAP WITH FELT FRONT
Alek, Boo, Duke, Howard, Irving, Matt, Nelson, Senso



SLIP CAP WITH FELT REAR
Alek, Beal, Earl 2 & 3 Seats, Boo, Duke, Howard, Irving, Matt Nelson, Senso, Beal hocker, Charles frame, Senso barchair, Irving barchair



DOP GEÏNTEGREERD VILT
Vasa diningchair



CAP WITH FELT
Barchair Forward, Irving, Senso

Maintenance conditions for our frames and our wooden tabletops.

Maintenance is necessary to maintain warranty. Do not use cleaning supplies for daily maintenance. Wipe with a slightly damp cloth, dry after rubbing. Maintenance product is available at your dealer.

General conditions

- Normal wear is not covered by the warranty. With the steel frames you can see the material in its pure form. This means that stains, scratches and color differences can occur in the sample. This industrial appearance is inevitably linked to the properties of the material and is therefore not a ground for complaint.
- To prevent discolouration, avoid direct sunlight on your furniture as much as possible.
- Damage due to improper use or incorrect maintenance are excluded from the warranty.
- Avoid damage by sharp objects. These damages are expressly excluded from the warranty.
- Repairs to furniture without written permission from Jess Design in advance result in exclusion from the warranty.

With the steel frames you can see the material in its pure form. This means that stains, scratches and color differences can occur in the sample. This industrial appearance is inevitably linked to the properties of the material and is therefore not a ground for complaint.

Conditions concerning wooden table tops
Tables with non-standard dimensions are not covered by the warranty in case of operation or sagging of the top.

When moving tables, these need

to be lifted and never to be shifted. This is to prevent damage to legs and / or construction. These damages are excluded from the warranty.

- Wood discolours over time. This is a natural feature and is therefore not covered by warranty. Take this natural discoloration by light into account and therefore regularly move any accessories on the tops of your furniture.
- Never place your furniture too close to a heat source, to minimize cracks in the wood. With solid wooden furniture, hairline cracks can always occur in the wood, this is not a reason for complaint.
- Avoid damage by sharp objects. These damages are excluded from the warranty. Provide vases or the like with felt or mat.
- Never place hot pans and other hot objects directly on the wood, but always on coasters. Damage caused by hot products is excluded from complaint.

The quality of your solid wood furniture is best guaranteed with an air humidity of 45-60%. This humidity can be measured with a hygrometer. With oiled furniture, it is very important to re-oil it a few weeks after use (or sooner if the wood looks poor) and then repeat this several times a year. This is for protection and to prevent the wood from drying out.

Leather Bonanza

Type: Saddle with pull up effect
Maintenance: #6065 Keralux® set S

Leather Aurula

Type: Vintage
Maintenance: #60960 Keralux® set Vi, #3290 Keralux®

Leather Royal

Type: Pigmented with wax finish
Maintenance: #6065 Keralux® set S

Leather Luxor

Type: Anilin with wax finish
Maintenance: #6065 Keralux® set S

Fabric Amsterdam

Type: Flat tissue
Maintenance: #910099 Puratex® complete care set, #10708 Pura-tex® strong cleaner

Fabric Melbourne

Type: OUTDOOR
Maintenance: #910099 Puratex® complete care set, #1100 Puratex® synthetic cleaner

Fabric Oslo

Type: Chenille
Maintenance: #634001 LCK® cleaning glove dry

Fabric Paris

Type: Flat tissue
Maintenance: #634001 LCK® cleaning glove dry

Fabric Riga

Type: Flat tissue
Maintenance: #634001 LCK® cleaning glove dry

Fabric Stockholm

Type: Chenille
Maintenance: #634001 LCK® cleaning glove dry

Fabric Tundra

Type: OUTDOOR
Maintenance: #910099 Puratex® complete care set, #1100 Puratex® synthetic cleaner

Tafeltop oak

Type: Oak bianco oil. For daily maintenance, wipe with a lightly damp cloth, then wipe dry. Depending on use, use maintenance product texture oil 2-30VK white 40 (incl. Sanding sponge and cloth). Maintenance: Jess structure oil 2-30VK white 40

Tabletop sandblasted black oak

Type: Oak charcoal oil for sandblasted version. For daily maintenance, wipe with a lightly damp cloth, then wipe dry. Depending on use, use maintenance product structure oil 2-30VK (incl. Gloves, scouring pad and cloth). Maintenance: Jess structure oil 2-30VK

Tabletop walnut

Type: Nut oil and oak oil. For daily maintenance, wipe with a lightly damp cloth, then wipe dry. Depending on use, use maintenance product structural oil 2-40VK 250ml (incl. Scouring sponge and cloth). Maintenance: Jess structure oil 2-40VK